

Supported Employment Services

To come true, dreams need opportunity, and support. This is what MARC provides to adults with developmental and intellectual disabilities

“It reminds me of what is really important. Jason is great. He says hi to everyone and makes our day feel better while he works to dispose of expired meds. I am so glad you convinced us to do this!”
-Mallatt's Pharmacy

“Our MARC employee has helped us to scan decades-old documents. We are so grateful for his determination and competence”
-USDA Forest Service

Serving Dane County

**Please contact us today
for a tour!**

www.marc-inc.org

Phone: 608-223-9110

Fax: 608-223-9112

Email: info@marc-inc.org



MARC would like to thank our wonderful donors and these fine partner funding sources and sponsors

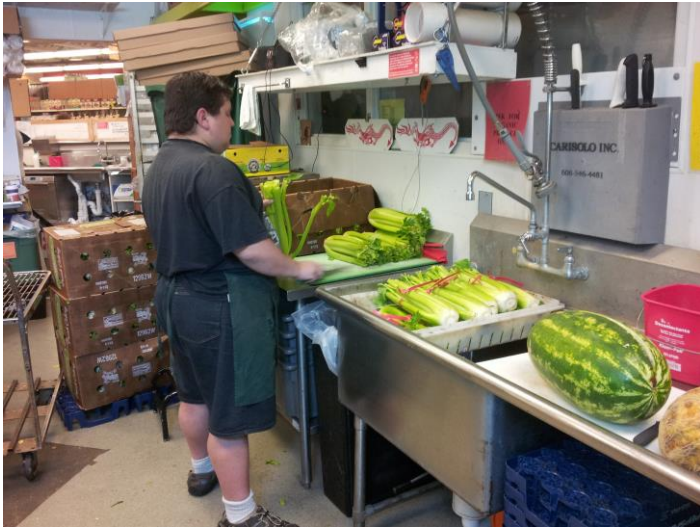


Partnering with Employers – Solutions through Supported Employment



www.marc-inc.org

The heart of Human Services



Satisfied Employers (partial list)

Capital Brewery
 Christ Presbyterian Church
 City of Madison
 Copp's Food Center
 Culvers
 Dane County
 Fitchburg Senior Center
 High Point Church
 Hy-Cite Corporation
 Hy-Vee
 Jim Lindemann's Organic Farm
 Kennedy Heights Community Center
 Kohl's Department Store
 Mallat's Pharmacy
 Mother Nature Diaper Service
 Mt. Horeb School District
 Oakwood Village
 Our Savior Deaf Lutheran Church
 Potter's Crackers
 Prairie Athletic Club
 Sequoya Library
 South Madison Library
 Speedway
 Springs Window Fashions
 St. Mary's Care Center
 Stoughton Chamber of Commerce
 Tanya's Big House for Kids
 Target Greatland
 Teddy's Place
 Ten Pin Bowling Alley
 University of Wisconsin
 USDA Forest Products Laboratory
 UW Hospital - Project SEARCH
 VA Hospital - Project SEARCH
 Vintage Brewing, Co.
 Walgreen's Distribution Center
 Wal-Mart
 Willy Street Co-op
 WI Dept. of Agriculture
 WI Dept. of Natural Resources
 YMCA

Meeting Employer's Needs

Recruitment & Screening

- MARC prescreens candidates for qualified, dependable, long term employees
- Committed to your business performance
- Dedicated and competent employees

Training

- MARC staff train on site, followed by client training, supervision, and coaching to meet employer needs. We provide disability awareness and diversity training
- Respect for values and standards of employer
- Low/no cost accommodations, creative problem solving
- Training continues if duties change

Benefits to Employers

- Federal and state tax incentives
- Increased workforce diversity
- Increased customer loyalty for businesses who hire individuals with disabilities
- Dedicated employees with a strong commitment to work
- Increased retention rate and dependability
- Savings of advertising and training dollars
- Many MARC partner employers report an overall increase in morale, motivation, and team spirit in the workplace from hiring people with disabilities

